



# Beaufort County Public Works Stormwater Infrastructure Project Summary

**Project Summary:** Bluffton Middle School (Reimbursement)

**Activity:** Routine/Preventive Maintenance

**Narrative Description of Project:**

**Completion:** Apr-13

Project improved 480 L.F. of drainage system. Removed 120 L.F. of channel pipe. Reconstructed 120 L.F. of channel to plan design. Cleaned out 360 L.F. of channel. Installed strawmat, v-mat and hydroseeded for erosion control.

2013-022 / Bluffton Middle School	Labor Hours	Labor Cost	Equipment Cost	Material Cost	Contractor Cost	Indirect Labor	Total Cost
AUDIT / Audit Project	1.0	\$20.89	\$0.00	\$0.00	\$0.00	\$13.23	\$34.12
HAUL / Hauling	64.0	\$1,404.10	\$859.72	\$632.25	\$0.00	\$873.78	\$3,769.85
HYDR / Hydroseeding	15.0	\$354.15	\$32.54	\$242.16	\$0.00	\$133.35	\$762.20
ODBH / Outfall ditch - bushhogged	39.0	\$895.91	\$590.15	\$1,709.98	\$0.00	\$385.77	\$3,581.81
ODCO / Outfall ditch - cleaned out	52.0	\$1,208.20	\$708.29	\$304.77	\$0.00	\$492.66	\$2,713.91
ONJV / Onsite Job Visit	44.0	\$1,231.60	\$168.84	\$148.34	\$0.00	\$949.42	\$2,498.19
PI / Project Inspection	3.0	\$120.69	\$12.06	\$15.50	\$0.00	\$101.88	\$250.13
PL / Project Layout	3.0	\$120.69	\$12.06	\$12.40	\$0.00	\$101.88	\$247.03
PP / Project Preparation	9.0	\$223.65	\$0.00	\$0.00	\$0.00	\$95.01	\$318.66
PROFS / Professional Services	0.0	\$0.00	\$0.00	\$0.00	\$1,100.00	\$0.00	\$1,100.00
PRRECON / Project Reconnaissance	11.0	\$318.31	\$28.14	\$34.10	\$0.00	\$243.45	\$624.00
UTLOC / Utility locates	2.0	\$41.78	\$0.00	\$0.00	\$0.00	\$26.46	\$68.24
<b>2013-022 / Bluffton Middle School Sub Total</b>	<b>243.0</b>	<b>\$5,939.97</b>	<b>\$2,411.80</b>	<b>\$3,099.49</b>	<b>\$1,100.00</b>	<b>\$3,416.89</b>	<b>\$15,968.15</b>
 <b>Grand Total</b>	 <b>243.0</b>	 <b>\$5,939.97</b>	 <b>\$2,411.80</b>	 <b>\$3,099.49</b>	 <b>\$1,100.00</b>	 <b>\$3,416.89</b>	 <b>\$15,968.15</b>

Before



During



After





**Project: Bluffton  
Middle School  
(Reimbursement)**

**Activity: Routine/  
Preventive  
Maintenance**

**Project #:  
2013-022**

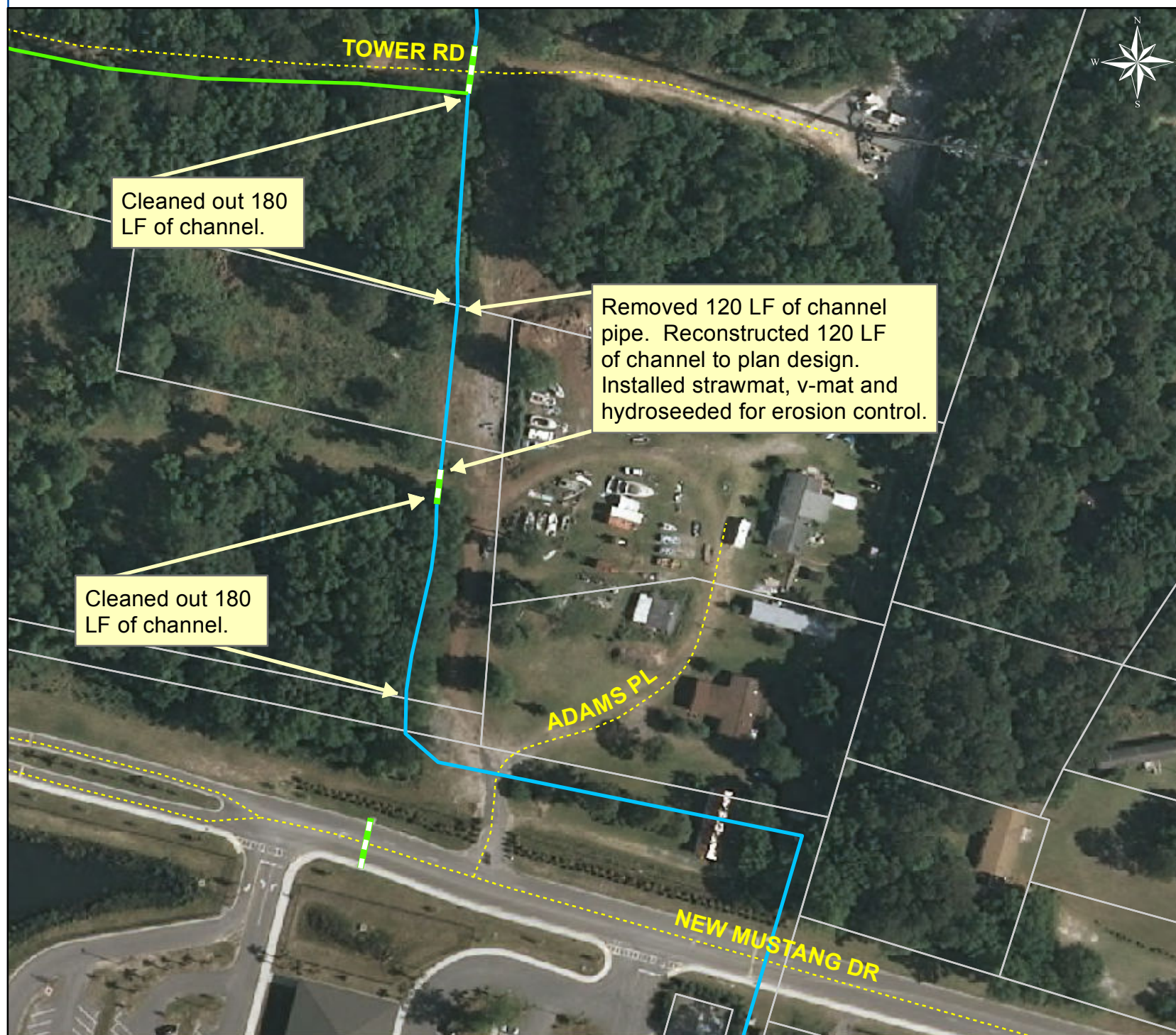
**Township:  
Bluffton**

**Completed:  
April 2013**

**Legend**

**TYPE**

- River
- Creek/Stream
- River/Creek/Marsh BANK
- Channel (fka Outfall)
- Channel Pipe
- Lateral
- Lateral Pipe
- Roadside
- Roadside Pipe
- Road Pipe
- Crossline Pipe
- Driveway Pipe
- Access Pipe
- Bleeder Pipe



0 30 60 120 180 240  
Feet

1 inch = 120 feet

Prepared By: BC Stormwater Management Utility

Date Print: 5/29/13

File: C:/sethdata/projects/projectmaps/Bluffton Middle 2013-022